

FORMING MACHINE PF



PF 30 ÷ PF 33 ÷ PF 36 ÷ PF 40 ÷ PF 45



**Reseller Stamp for
Warranty**

The equipment is constructed and tested in accordance with the safety regulations indicated in the reference European directives.

This manual is for people who are going to install, use or service the kneading machine so they may get the very best out of it.

In the case of questions about the contents or for any other clarification, contact the manufacturer or authorized technical assistance centre, providing the number of the section and topic needing clarification.

It is important to keep this manual with the oven, even if it is moved elsewhere or changes hands, so it may be consulted whenever needed, using the information it contains which is necessary to ensure working under safe conditions.

In addition, this document is the property in legal terms, and it is prohibited to tamper with or translate its contents, or distribute it to third parties without authorization.

The technical information, graphic representations and specifications contained in this manual are not to be distributed.

The manufacturer is not obliged to advise of any subsequent changes to the product

© Copyright 2008

INDEX

1 INTRODUCTION

1.1 SYMBOLS

1.2 INTENDED USE

1.3 PURPOSE AND CONTENTS OF MANUAL

1.4 CONSERVATION OF THIS MANUAL

1.5 MANUAL UPDATING

1.6 GENERAL INFORMATION

1.7 RELEVANT SAFETY AND ACCIDENT
PREVENTION REGULATIONS TO BE
ADHERED TO

1.8 LEGAL WARRANTY

1.9 MANUFACTURER RESPONSIBILITY

1.10 USER CHARACTERISTICS

1.11 TECHNICAL ASSISTANCE

1.12 SPARE PARTS

1.13 IDENTIFICATION LABEL

1.14 DELIVERY OF THE FORMING MACHINE

2 SAFETY RECOMMENDATIONS

2.1 WARNINGS FOR THE INSTALLER

2.2 WARNINGS FOR THE USER

2.3 WARNINGS FOR THE MAINTENANCE
TECHNICIAN

- 3** MOVEMENT AND TRANSPORT
- 4** PREPARATION OF THE INSTALLATION AREA
 - 4.1 SAFETY PRECAUTIONS
 - 4.2 MACHINE INSTALLATION LOCATION
- 5** INSTALLATION
 - 5.1 FORMING MACHINE LEVELLING
 - 5.2 EQUIPMENT HOOK-UP
 - 5.2.1 Electrical connection
 - 5.2.1.1 Ground connection*
- 6** FORMING MACHINE START-UP AND USE
 - 6.1 COMMAND PANEL DESCRIPTION
 - 6.2 START-UP PHASE
 - 6.3 WORKING PHASE
 - 6.4 PROGRAMMING THE THERMOSTAT
 - 6.5 SHUT-DOWN PHASE
- 7** MAINTENANCE AND CLEANING
 - 7.1 SAFETY PRECAUTIONS
 - 7.2 ORDINARY MAINTENANCE FOR THE USER
 - 7.2.1 General cleaning
- 8** POSSIBLE FAULTS

- 9** INFORMATION FOR DEMOLITION AND DISPOSAL
- 10** ELECTRICAL DIAGRAM
- 11** EXPLODED DIAGRAM AND SPARE PARTS LIST
- 12** TECHNICAL DATA

Dear customer,

Above all, thank you for choosing our product and we would like to congratulate you on your selection.

In order to better use your new forming machine, please carefully read the information contained in this manual.

1 INTRODUCTION

The manufacturer reserves the right to change technical specifications and features and/or functions of the machine at any time without notice.

1.1 SYMBOLS

In this manual, important information it is highlighted using the following symbols:



INSTRUCTION: Instructions pertaining to correct use of the forming machine and those responsible for using the machine.



WARNING: Signifies a particularly important point.



DANGER: Signifies important information about practices for preventing accidents or damages

1.2 INTENDED USE

The forming machines were designed and constructed exclusively for use in food sectors for preparing dough made with grain flours, mainly for use in pizzerias, bakeries and pastry shops.

The intended use described above and the machine configurations are the only uses authorized by the Manufacturer: **do not use the machine in any way that does not adhere to the provided instructions.**



The intended use is valid only for equipment which is in good structural, mechanical and engineering condition.

1.3 PURPOSE AND CONTENTS OF MANUAL

Purpose:

The purpose of this manual is to allow the user to operate the machine in adherence to all regulations and to make use of the necessary materials for correct, safe and enduring use

Contents:

This manual contains all the necessary information for installation, use and maintenance of the forming machine.

Scrupulous adherence to the information contained in this manual guarantees high safety and productivity levels of the forming machine.

1.4 CONSERVATION OF THIS MANUAL

Conservation and Consultation:

The manual must be conserved with care and must always be available for consultation, both by the user and by those responsible for assembly and maintenance.

The Use and Maintenance Manual is an integral part of the machine.

Deterioration and Disposal:

If necessary, request another copy of the manual from the manufacturer or dealer.

Transfer of the kneading machine:

If the forming machine is to be transferred, the user is required to deliver this manual to the purchaser.

1.5 MANUAL UPDATING

This manual is a state of the art explanation of the machine at the moment the machine is released on the market.

The machines which are already available on the market, with their related documentation, will not be considered to be lacking or inadequate following possible modifications, adjustments or applications of new technologies on newly marketed machines.

1.6 GENERAL INFORMATION

Information:

In the case of exchange of information with the Manufacturer or the Dealer regarding the forming machine, please refer to the serial number and the identification data of the machine reported on the plate.

Responsibility:

With delivery of this manual, the Manufacturer declines any and all responsibility, both civil and criminal, for accidents deriving from partial or total non-adherence to the specifications contained herein.

The Manufacturer declines any and all responsibility deriving from improper use of the machine or incorrect use by the user, unauthorized modifications and/or repairs, use of unoriginal spare parts or parts not appropriate for this machine model.

Extraordinary maintenance:

Extraordinary maintenance operations must be executed by qualified personnel trained to intervene on the forming machine model referred to in this manual.

Responsibility for installation operations:



Responsibility for forming machine installation operations are not considered to be responsibility of the Manufacturer. This is, and remains, the responsibility of the installer who is in charge of executing the controls related to the correctness of the proposed installation. In addition, all safety regulations

outlined in currently enforced laws in the state in which the machine is installed must be respected.

Use:

In addition to the instructions contained in this manual, use of the machine is subject to all safety regulations outlined in the specific laws in the state where the machine is installed.

1.7 RELEVANT SAFETY AND ACCIDENT PREVENTION REGULATIONS TO BE ADHERED TO

- A) Directive 2006/95/CE "Regarding harmonization of legislation of the member States in relation to electrical materials destined for use within certain voltage limits".
- B) Directive 2004/108/CE "Regarding harmonization of legislation of the member States in relation to electromagnetic compatibility and that repealed by Directive 89/336/CEE".
- C) Directive 89/391/CEE "Regarding implementation of measures aimed at promotion of improvements in worker safety and health during the work shift".
- D) Directive 2006/42/CE "Regarding machines and amendments of the Directive 95/16/CE".
- E) Regulation No. 1935/2004 "Regarding materials and objects destined for contact with food products and that repealed by Directives 80/590/CEE and 89/109/CEE".
- F) Directive 85/374/CEE and Directive 1999/34/CE "Regarding harmonization of legislative, regulatory and administrative instructions, of the member States in

regards to responsibility for damages caused by defective products”.

- G) Directive 2002/95/CE “regarding use restrictions of determined hazardous substances in the electrical and electronic equipment”.
- H) Directive 2002/96/CE and 2003/108/CE “Regarding disposal of electrical and electronic equipment RAEE) and subsequent amendments.”

1.8 LEGAL WARRANTY

The period of the guarantee is in agreement with the European community standards and starts from the date of the invoice issued at the time of purchase..

Within such a period parts will be replaced or repaired free of charge, only **free our works** that, for unequivocal and well ascertained reasons, are found to have manufacturing defects; this does not include electrical components and those subject to wear.

Shipping costs and labour are not included in the guarantee.

In order to make use of the legal warranty, the user must, as outlined in Directive 1999/44/CE, strictly observe the instructions contained in this manual, and in particular:

- always operate the forming machine within the limits of its intended use;
- always and diligently execute constant maintenance;

- authorize only personnel with adequate skills, behaviour and proper training to use the forming machine.

Non-adherence to the instructions contained in this manual will cause the warranty to be considered immediately null and void.

1.9 MANUFACTURER RESPONSIBILITY



The manufacturer declines all civil and criminal responsibility, direct or indirect, due to:

- installation that does not conform to local currently enforced regulations and safety directives;
- non-observance of the instructions contained in this manual;
- installation by unqualified and untrained personnel;
- use that does not comply with safety directives;
- modifications and repairs on the machine that are unauthorized by the Manufacturer;
- use of unoriginal spare parts or parts not specific to the forming machine model;
- lack of maintenance;
- extraordinary events.

1.10 USER CHARACTERISTICS

The user of the forming machine must be an adult, responsible person having the necessary technical knowledge for ordinary maintenance of the mechanical and electrical components of the forming machine.

Be sure to keep children away from the machine while it is operating.

1.11 TECHNICAL ASSISTANCE

The Manufacturer is able to resolve any problems that occur regarding use and maintenance of the machine for its entire lifespan.


The central headquarters is at your disposal for information about the nearest authorized assistance centre.

1.12 SPARE PARTS

Use exclusively original spare parts.

Do not wait until components are worn out before replacing them.

Replacing a worn component before breakage helps to prevent injuries deriving from accidents caused by unexpected component breakage, which could provoke serious damage to persons or things.

 ***Execution of periodical maintenance controls as indicated in the chapter "MAINTENANCE AND CLEANING"***

1.13 IDENTIFICATION LABEL

The identification label placed on the kneading machine contains all of the machine data, including Manufacturer data, the **serial number** and the brand C€.

1.14 DELIVERY OF THE FORMING MACHINE

The forming machine is provided in a wooden package bound with straps to a wooden platform that can be moved using forklifts and/or other means.

Inside of the package, in addition to the machine, there are also instructions for use, installation and maintenance, as well as the declaration of conformity in accordance with the machines directive.

2 SAFETY RECOMMENDATIONS

2.1 WARNINGS FOR THE INSTALLER



- Check that the location of the forming machine is in compliance with local, national and European regulations.
- Adhere to the instructions in this manual.

- Do not execute electrical connections using temporary or uninsulated cables.
- Check that the ground connection of the electrical system is functioning properly.
- Always use individual safety devices and other means of protection in compliance with the law.

2.2 WARNINGS FOR THE USER



The conditions in the surrounding area where the machine will be installed must have the following characteristics:

- the area must be dry;
- the area must have water and heat sources at an adequate distance;
- ventilation and lighting must be suitable and comply with the hygiene and safety standards foreseen by current laws;
- the floor must be flat and compact to facilitate thorough cleaning;
- there must be no obstacles of any kind in the immediate vicinity of the machine that could effect the machine's normal ventilation.

In addition, the user must:

- make certain to keep children away from the machine when it is operating;
- adhere to the instructions in this manual.

- not remove or tamper with the safety devices on the machine;
- always pay careful attention to the work at hand and not use the machine when in a distracted state;
- perform all operations with maximum safety and calm;
- respect the instructions and warnings displayed on the machine labels.

The labels are accident prevention devices, and therefore must always be perfectly legible. If these should be damaged and illegible, it is mandatory to replace them by requesting replacements from the Manufacturer.

- At the end of each working shift, before cleaning, maintenance or transfer operations, disconnect electrical power.

2.3 WARNINGS FOR THE MAINTENANCE TECHNICIAN



- Observe the instructions indicated in this manual.
- Always use individual safety devices and other protection means.
- Before starting any maintenance operations, make sure that the forming machine, if it was used, is cooled down (plates, electric motor).

- If any of the safety devices is worn or faulty, the forming machine is also considered faulty and not to be used.
- Disconnect electrical power before intervening on electrical or electronic parts and connectors.

3 MOVEMENT AND TRANSPORT

The machine is provided complete with all of the necessary parts in a closed package attached to a wooden pallet with straps.

Be careful of the machine's tendency to topple.

The machine must be unloaded from the transport vehicle, lifting it with suitable equipment.

To transport the machine to its installation area, use a rolling cart with adequate load capacity.

During lifting operations, avoid sudden movements.

Make certain that the lifting means have a load capacity that is superior to the weight of the machine to be lifted.


The operator manoeuvring the lifting equipment is responsible for lifting the load.

Leave a free space of approximately 50 cm around the forming machine to facilitate use, cleaning and maintenance operations.

If the forming machine is unstable due to irregularities in the bench, adjust the feet by tightening and


loosening them after unscrewing the bolt. Once adjusted tighten the bolt again.

DANGER

-  **Be careful that children do not play with the packaging materials (for example, plastic film and styrofoam). Suffocation danger!**

4 PREPARATION OF THE INSTALLATION AREA

4.1 SAFETY PRECAUTIONS

-  Responsibility for operations executed in the location where the machine is installed is, and remains, of the user. The user is also responsible for execution of controls related to the installation of the machine.

The user must adhere to all local, national and European safety regulations.

The equipment must be installed on floors with adequate load capacity.

The assembly and disassembly instructions for the forming machine are reserved for specialized technicians.

It is always recommended that users contact our assistance service for technical requests.

If other technicians intervene, it is recommended to make certain of their skills.

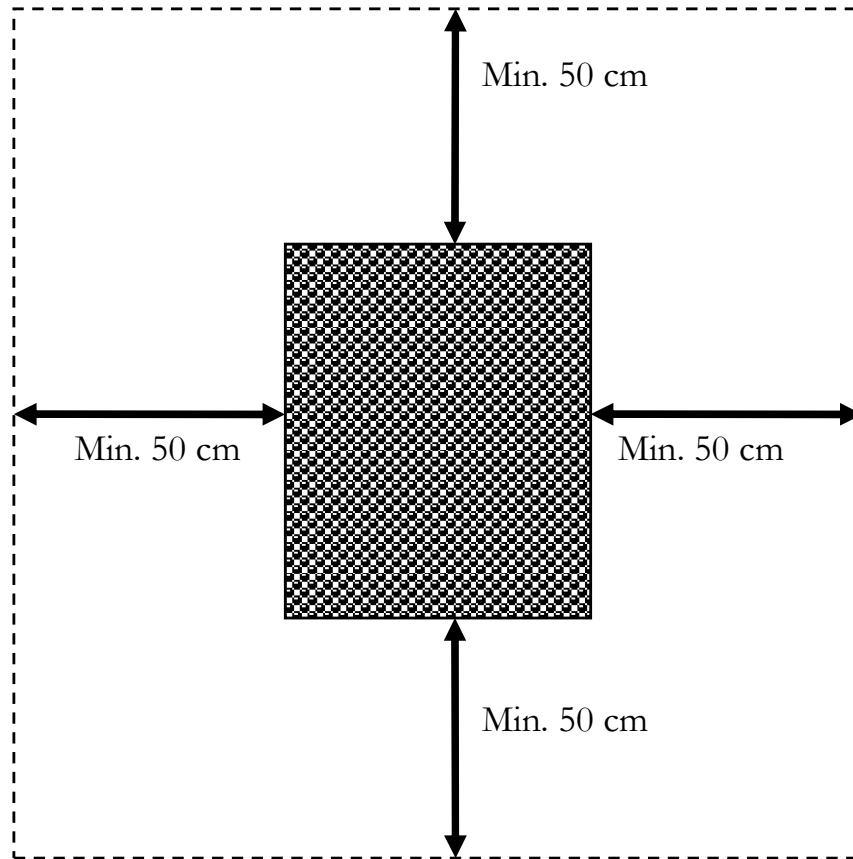
Prior to starting machine assembly or disassembly, the installer must adhere to safety precautions in compliance with the law, and in particular must:

- A) not operate in adverse conditions;
- B) operate in perfect psycho/physical conditions and must check that the individual accident prevention devices are perfectly functional;
- C) wear accident prevention gloves;
- D) wear accident prevention footwear;
- E) use tools that are electrically insulated;
- F) make sure that the area used for assembly and disassembly is free of any obstacles.

4.2 MACHINE INSTALLATION LOCATION

The figure below illustrates the minimum distances that must be respected when positioning the machine to facilitate use, cleaning and maintenance of the forming machine.

The minimum distance that must be respected between the forming machine and surrounding walls or other machines must be approximately 50 cm.



5 INSTALLATION

Installation must be executed by qualified personnel in compliance with local, national and European regulations.

5.1 FORMING MACHINE LEVELLING

If the machine is unstable due to floor irregularity, adjust the support feet by inserting rubber pieces.

5.2 EQUIPMENT HOOK-UP

5.2.1 Electrical connection

It is sufficient to connect the power supply cable to the electrical mains power supply.

The electrical outlet must be easy to access, no moving should be necessary.



The electrical connection (plug) must be easily accessible, also following forming machine installation.

The distance between the machine and the socket must be adequate to not cause tension in the power supply cable. In addition, the cable must not be located beneath the machine support feet or wheel.



If the electrical power supply cable is damaged, it must be replaced by the technical assistance service or by a qualified technician to prevent any risks.

5.2.1.1 *Ground connection*

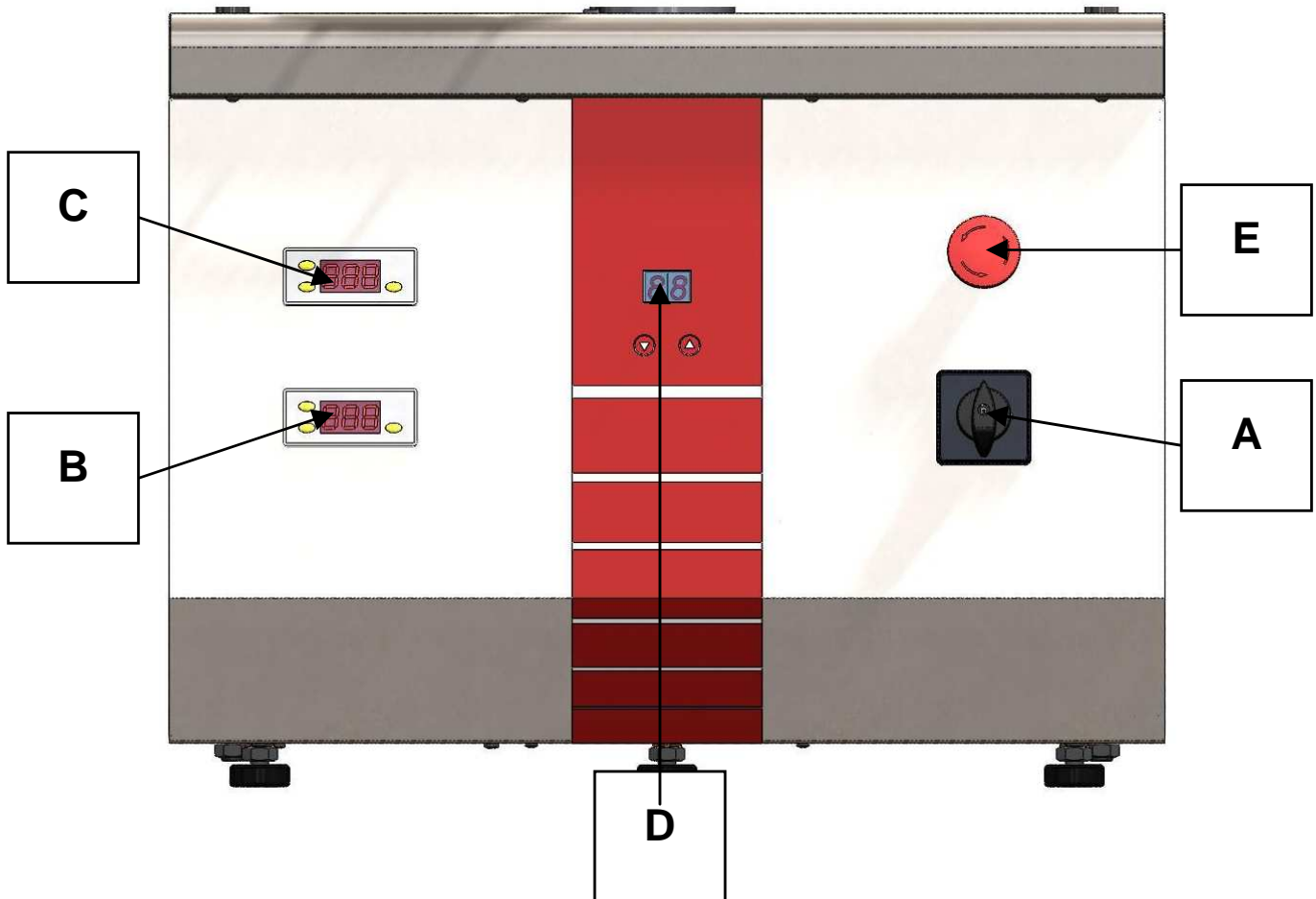
DANGER



It is mandatory that the electrical system is equipped with a ground connection and differential switch that comply with currently enforced laws.

6 KNEADING MACHINE START-UP AND USE

6.1 COMMAND PANEL DESCRIPTION



Legend:

- A = Main switch
- B = Lower plate thermostat
- C = Upper plate thermostat
- D = Timer stops in the compression phase
- E = Motor inversion red button

The panel consists of a main switch (**A**), 2 thermostats (**B ÷ C**), a timer (**D**), a red emergency stop button (**E**).

The panel permits start-up and stopping of the forming machine, and regulates functioning and settings.

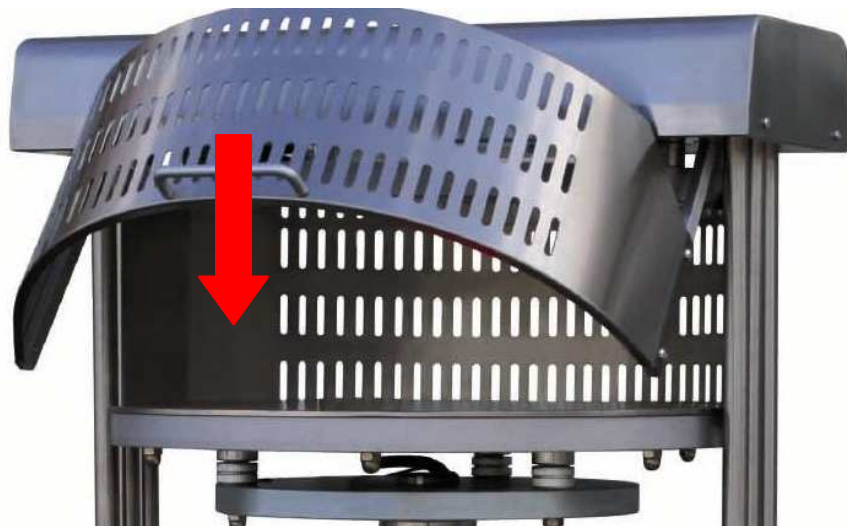
6.2 START-UP PHASE

Connect the forming machine to the electrical mains and turn the main switch **A** to the position “1”.

Adjust thermostats **B** and **C** of the plates to 150° C (see paragraph 6.4).

Programme timer **D** to 0.6-1 seconds.

Close the protection (see figure below) to start the raise and lower cycle of the lower disk.



Turn the machine on, after about 15 minutes execute a few no load starts and check that both the heating of the discs and overall operation is normal.

6.3 WORKING PHASE

Prior to starting each work cycle, make sure that the machine is perfectly clean, especially the surface of the plates, the protections and any surface in contact with food products.

Whenever necessary, proceed with cleaning in accordance with the description in **chapter 7**.

With the purpose of optimising the forming of the dough in the first cycles and, if needed, also in the following cycles, spread a thin layer of oil on the surfaces that come into contact with the dough discs. After turning on the machine, programme the timer **D** from 0 to 1.5 seconds and set the thermostats **B** and **C** to values between +150°C and +160°C. The electric heating elements, located inside the discs, are turned on simultaneously which, due to the heat effect, start the disc heating phase and the temperature is maintained constant at the values set with the thermostats.

DANGER



It is absolutely forbidden to put your hands inside the discs while the machine is running. In addition, the discs and the adjacent surfaces get extremely hot and can become a hazard for burning. Hence it is essential to pay maximum attention, avoid

contact with the parts mentioned, follow the instructions for use.

Once the discs have become thermally stable (the waiting time for this varies according to the temperature set) the working phase can be started.

Using a suitable spatula which you have floured slightly, take a ball of dough (that has already been left to rise for at least 4 - 6 hours) and place it in the middle of the bottom disc.

Close the protection to start the raise and lower cycle of the lower disk.

The length of time for which the discs are compressed, necessary to form the dough, is set on timer D according to the value set previously.

At the end of compression the bottom disc moves down to the initial home position. At the end of the cycle the dough will have become flat and circular, ready to be taken with the spatula.



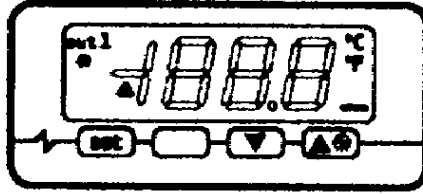
If, during the working phase, it is necessary to interrupt the ascent of the bottom disc and move it back into the home position, open the protection and press push button E.



Before proceeding with working phases, check the status of the various safety devices. These are in a good state when:

- the machine stops when the front protection is lifted;
- the machine does not start when the rear protection is lifted or removed.

6.4 PROGRAMMING THE THERMOSTAT



The thermostat (see figure) starts automatically when the switch (A) is turned on. During normal operation the display will show the temperature of the plate. To set the thermostat, press the **set** button: the Led out 1 will flash. Within 15 seconds, press the buttons ▲ (up) or ▼ (down) and set the desired temperature of the plate. Once the desired temperature is set press **set** or press nothing for 15 seconds.

☞ If the display shows **Pr1** (probe error) check the integrity of the probe or the tool-probe connection. This operation must be executed by qualified personnel

DANGER

⚠ **Before embarking on any maintenance work, including cleaning, take the plug out of the power socket and wait until the disks have cooled down completely.**

6.5 SHUT-DOWN PHASE

To shut down the forming machine, press the red emergency button **E** and turn the main switch knob **A** or the position “**0**”.

7 MAINTENANCE AND CLEANING

7.1 SAFETY PRECAUTIONS



Before performing any maintenance operations, including cleaning, take the following precautions:

- make certain that the main switch is disinserted;
- make certain that the electrical power cannot be accidentally reinserted. Disconnect the plug from the electrical power socket;
- use individual protection devices in compliance with the directive 89/391/CEE;
- always operate using appropriate maintenance tools;
- once maintenance and repairs are finished, before starting up the forming machine, reinstall all of the protection devices and reactivate all of the safety devices.

7.2 ORDINARY MAINTENANCE FOR THE USER

The forming machine requires simple, frequent and careful cleaning to ensure efficient, regular functioning.

7.2.1 General cleaning

The machine must be cleaned at the end of each use, in compliance with the hygiene regulations and to safeguard machine operation.

With the aid of a suitable brush, proceed with a first pass to remove flour and dough residuals. Clean the machine and in particular the surfaces of the discs that come into contact with the dough using a sponge or cloth dampened with water and detergent. If the latter is used, rinse to ensure its complete removal. Dry with kitchen paper and then first go over the surfaces in contact with the dough and then the whole machine with a soft, clean cloth soaked with a disinfectant specific for foodgrade machines.



It is recommended to never use chemical products which are not specific for food preparation areas, abrasives or corrosives for any reason. Avoid by all means using water jets, tools, rough or abrasive instruments, such as steel wool, brillo sponges or any other item which could damage the surface of the machine, and especially those that could compromise health safety.

8 POSSIBLE FAULTS

| Fault | Cause | Remedy |
|--|--|--|
| The machine does not start | Lack of electrical energy | Check the main switch, socket, plug and power supply cable |
| | The rear protection grating is up or removed | Check the correct position of the rear protection grating |
| | The main switch knob is in position "0" | Turn the knob to position "1" |
| The machine stops while it is being used | Foreign bodies between the discs | Press the push button to open the discs and remove the foreign bodies from the discs |
| The dough sticks to the discs | The dough hasn't risen enough | Spread a little oil on the discs. Let the dough leaven more |
| | Disc temperature is too low | Set the thermostats on 150°C-160°C |

9 INFORMATION FOR DEMOLITION AND DISPOSAL

Demolition and disposal of the machine is the sole responsibility of the owner, who must perform these tasks in compliance of currently enforced laws pertaining to safety and environmental protection in the country where the machine is installed.

Disassembly and disposal can also be performed by a third party, as long as an authorized entity for recovery and demolition of the materials in question.



INSTRUCTION: *always adhere to the currently enforced laws pertaining to disposal of materials and in the country where the machine is installed, and any possible necessity for registration of demolition.*



WARNING: *All disassembly operations for demolition must take place with the machine shut-down and disconnected from the electrical power supply.*

- *remove all electrical apparatus;*
- *separate the accumulators on the electronic cards;*
- *dispose of the machine structure through authorized entities;*



WARNING: *Abandoning the machine in accessible areas constitutes grave danger for persons and animals.*

Responsibility for possible damages to persons and animals is falls exclusively on the owner.

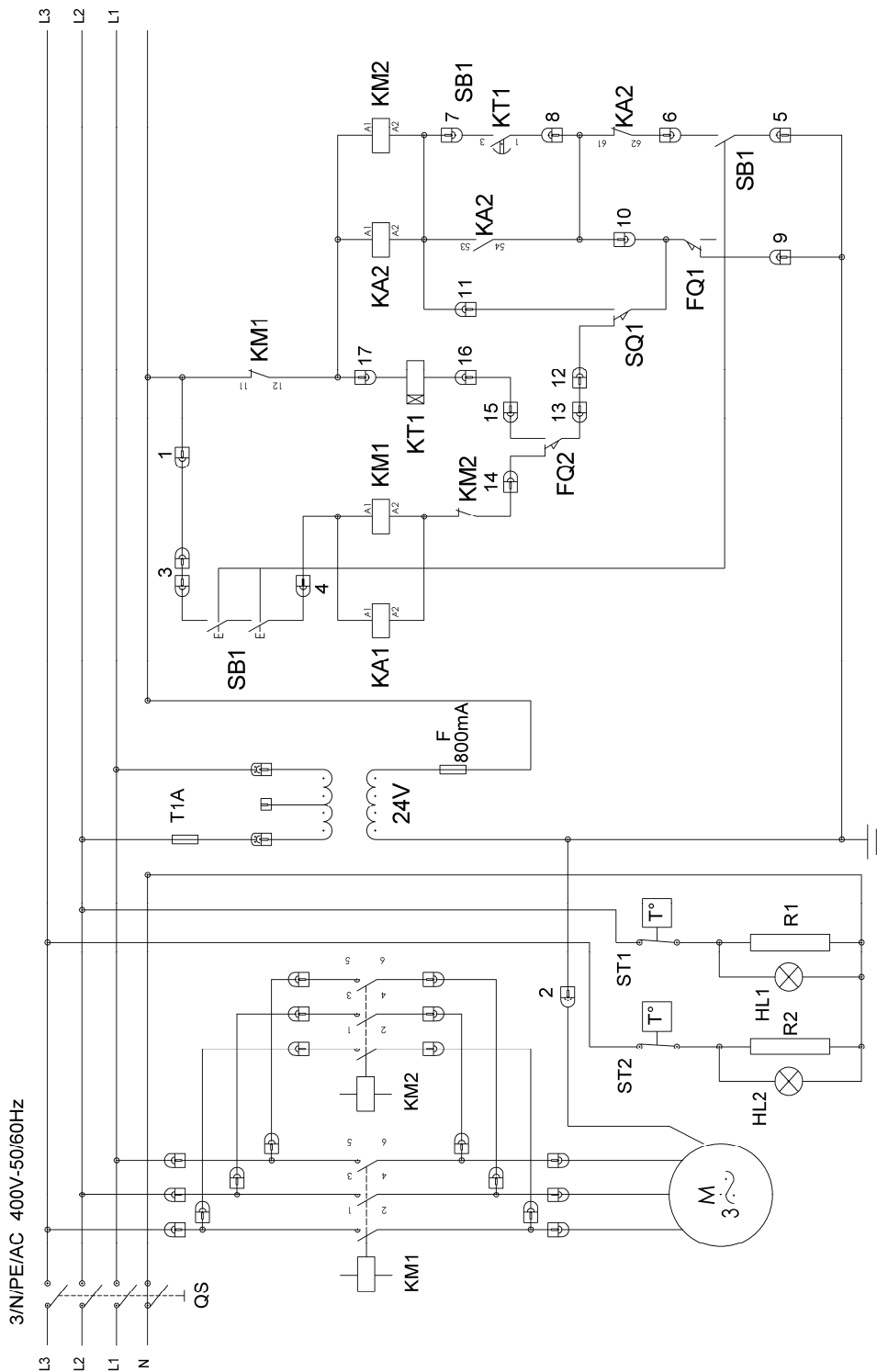
USER INFORMATION



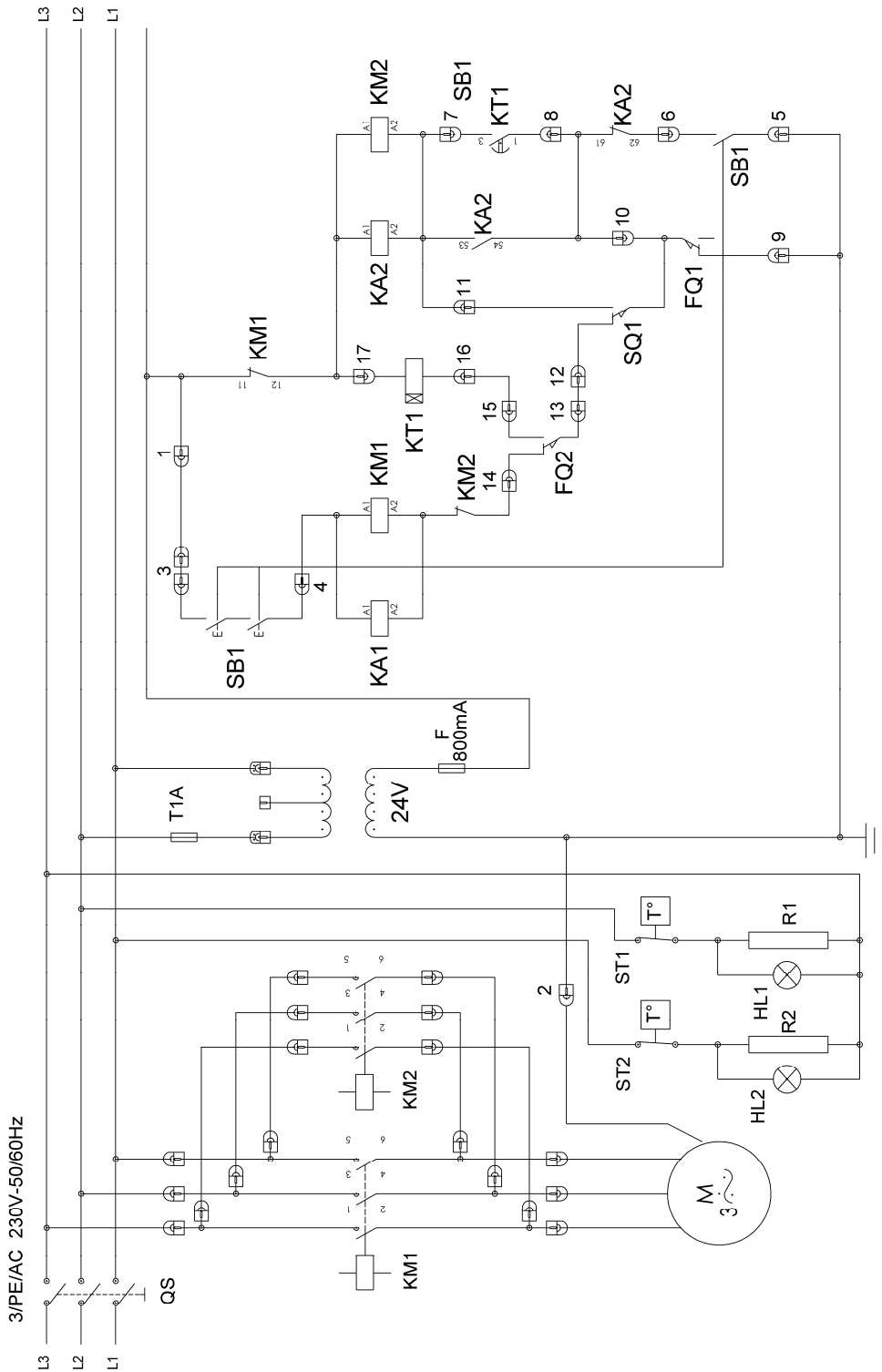
The equipment falls under application of the European Directives 2002/95/CE, 2002/96/CE, 2003/108/CE which states to never dispose of this product together with normal domestic waste. To prevent any possible damage to the environment or to human health, please keep this product separately from other waste so it can be recycled safely from an environmental point of view.

For more information about collection centres please contact the town office or the dealer you bought the product from.

10 ELECTRICAL SYSTEM

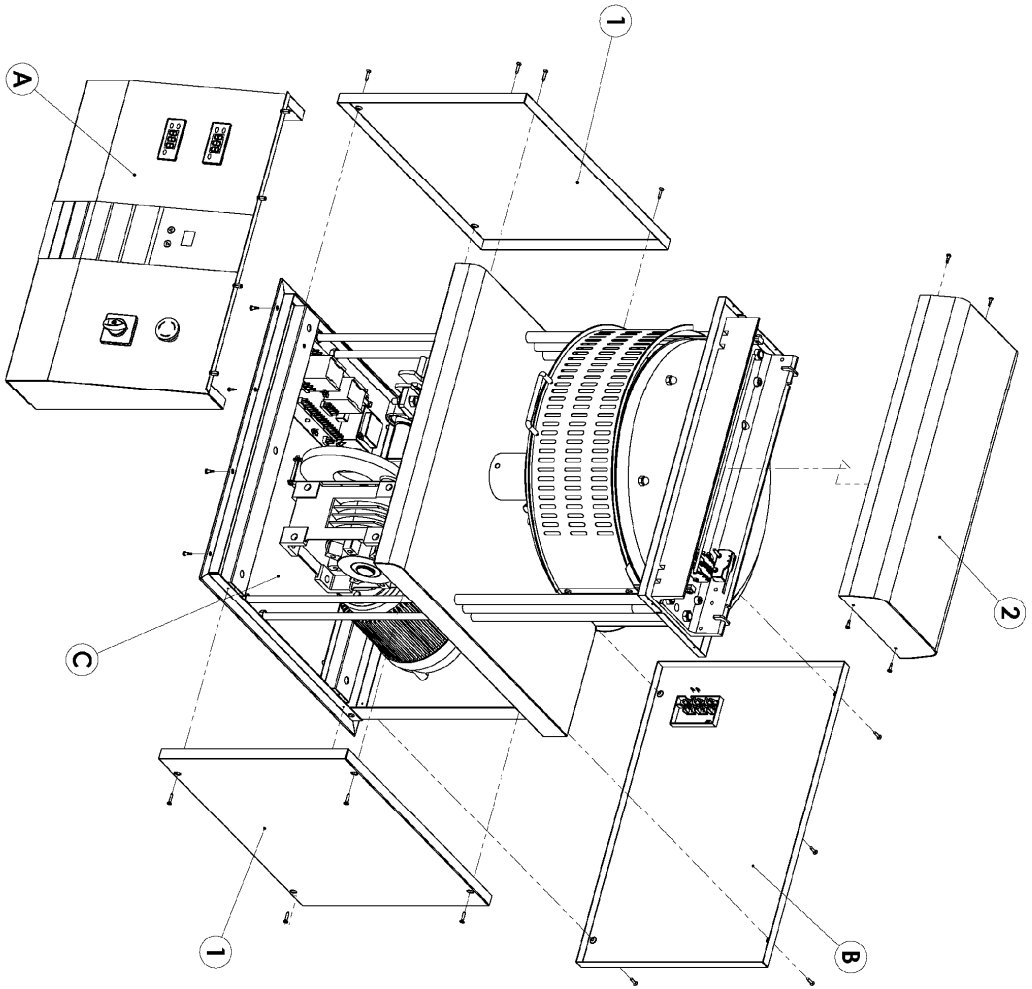


PF 30÷33÷36÷40÷45

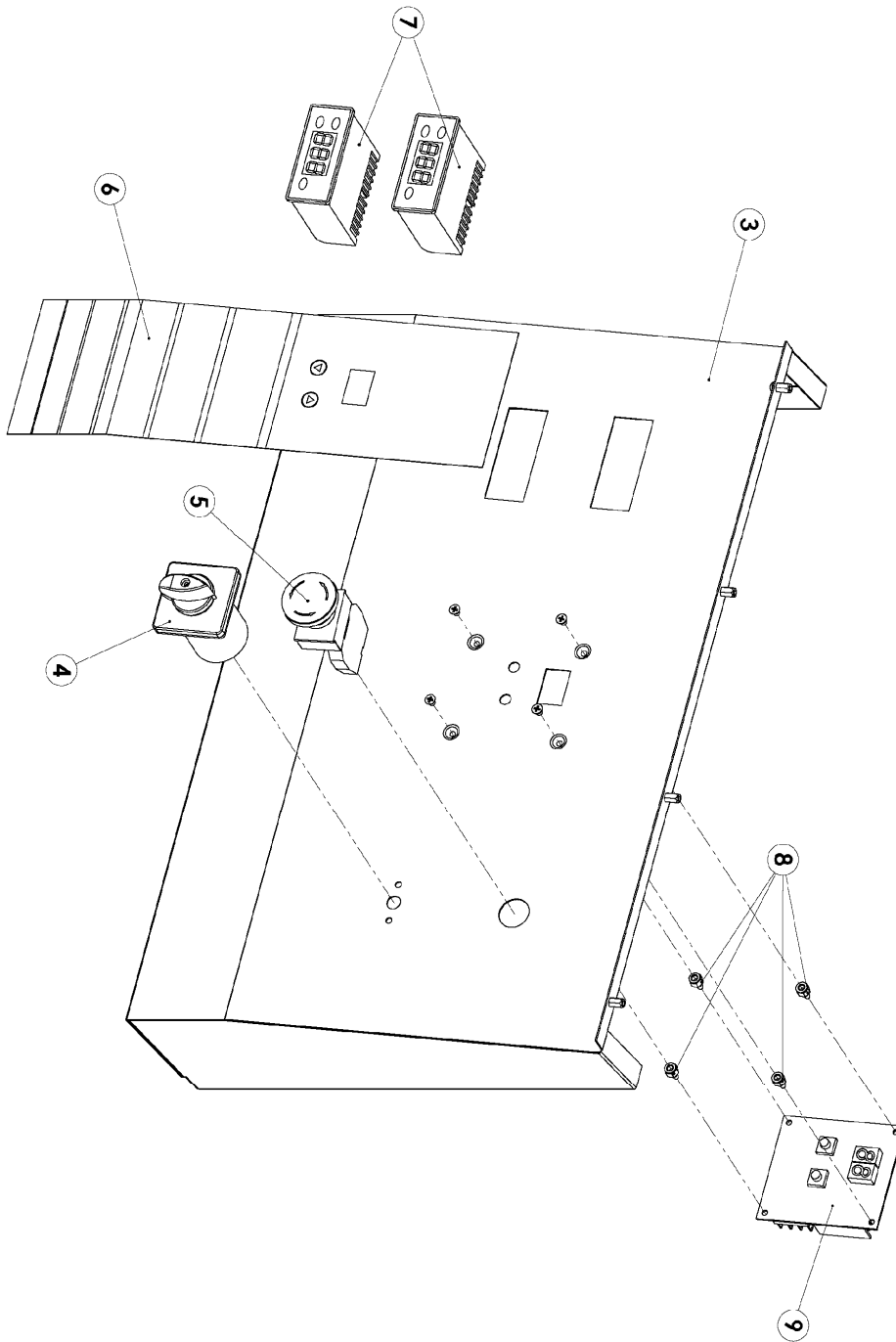


PF 30÷33÷36÷40÷45

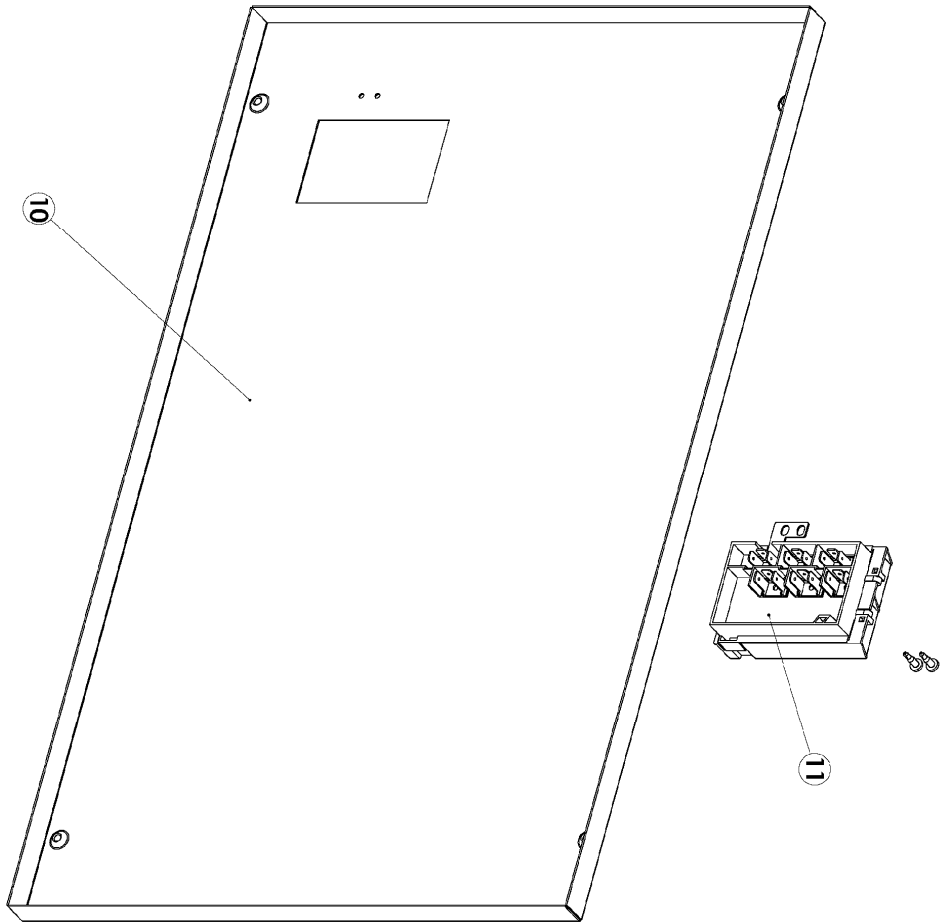
11 EXPLODED DIAGRAM AND SPARE PARTS LIST



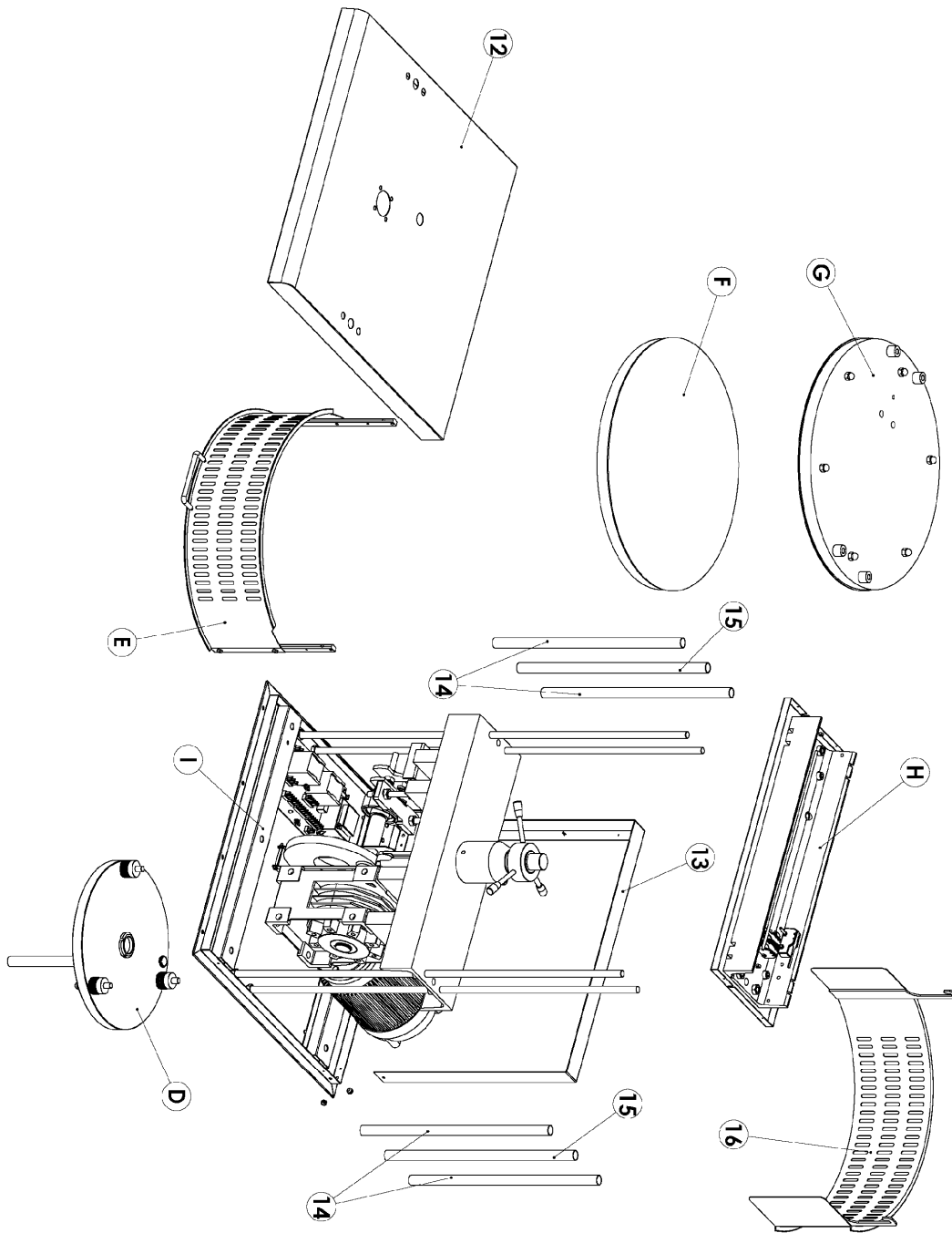
Pizzaform PF



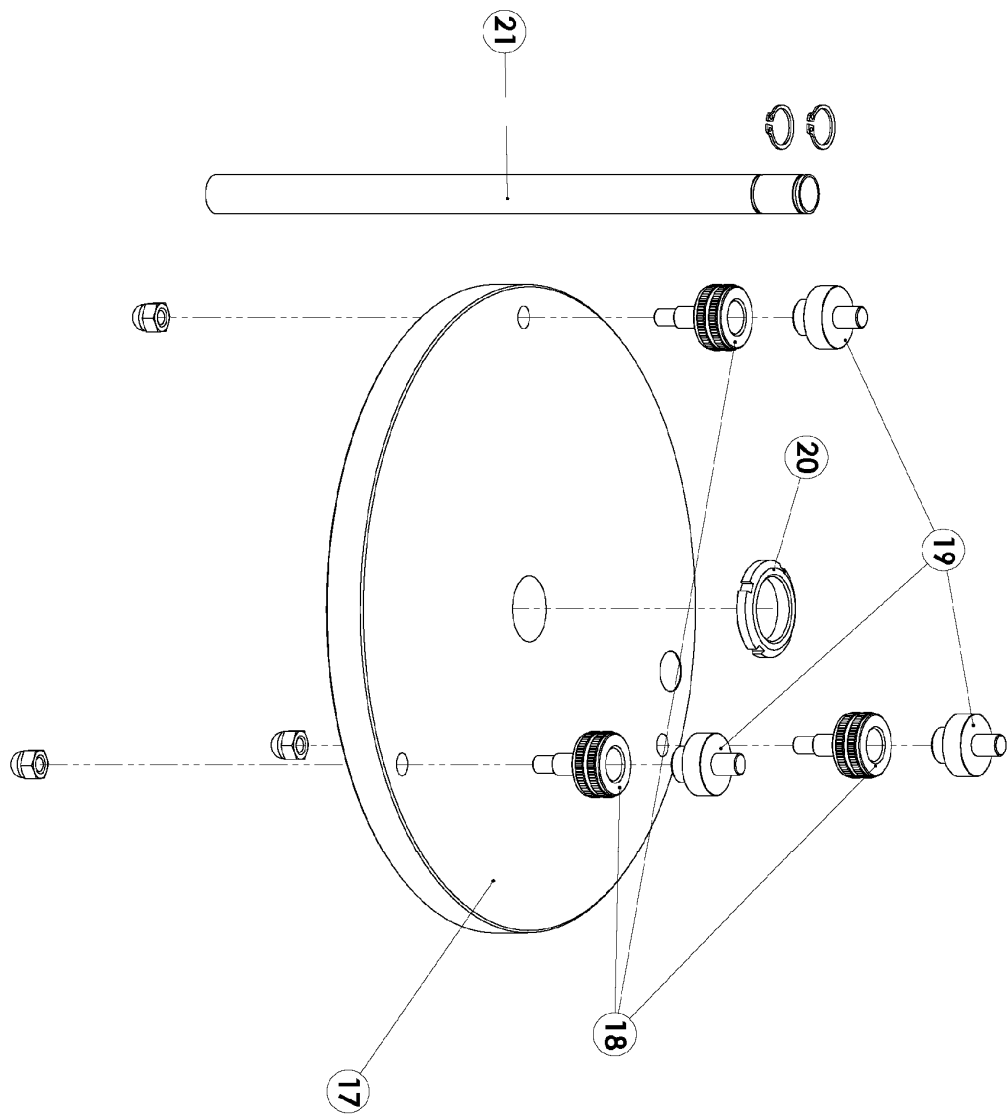
Item A



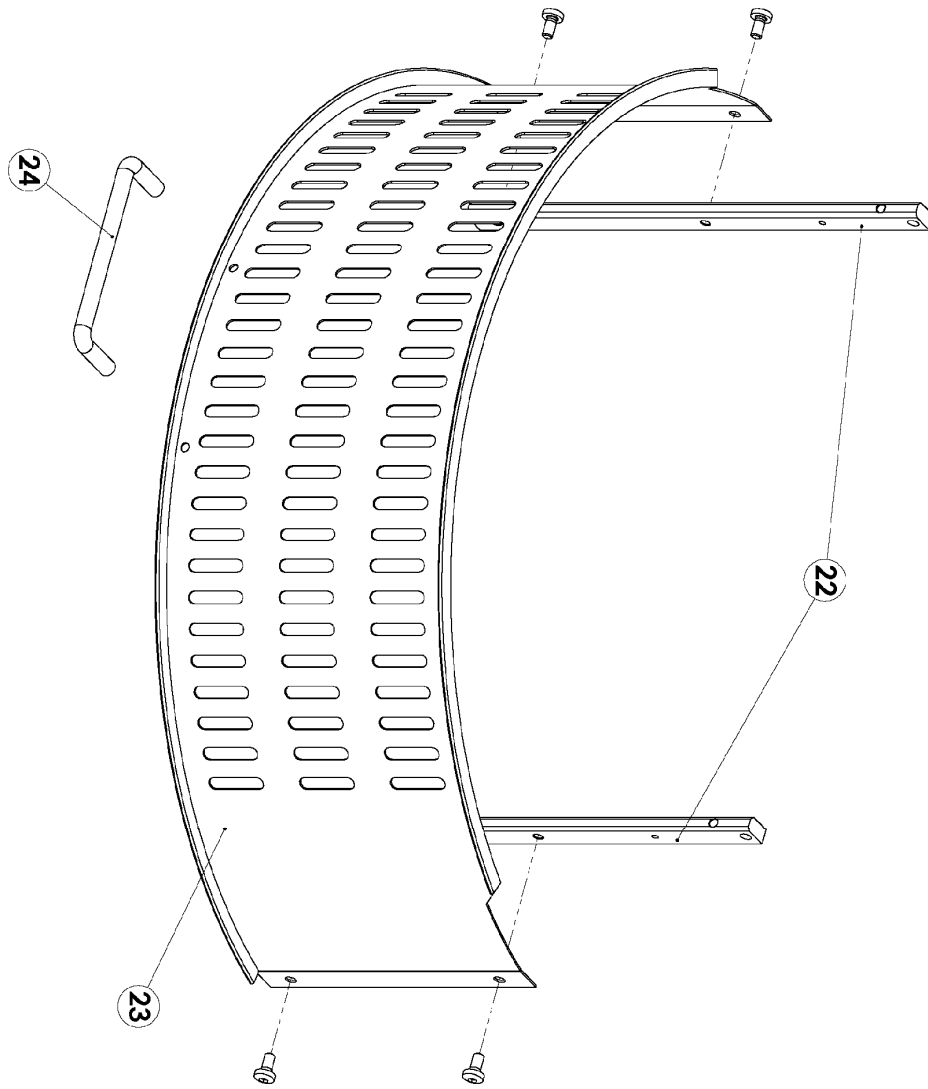
Item B



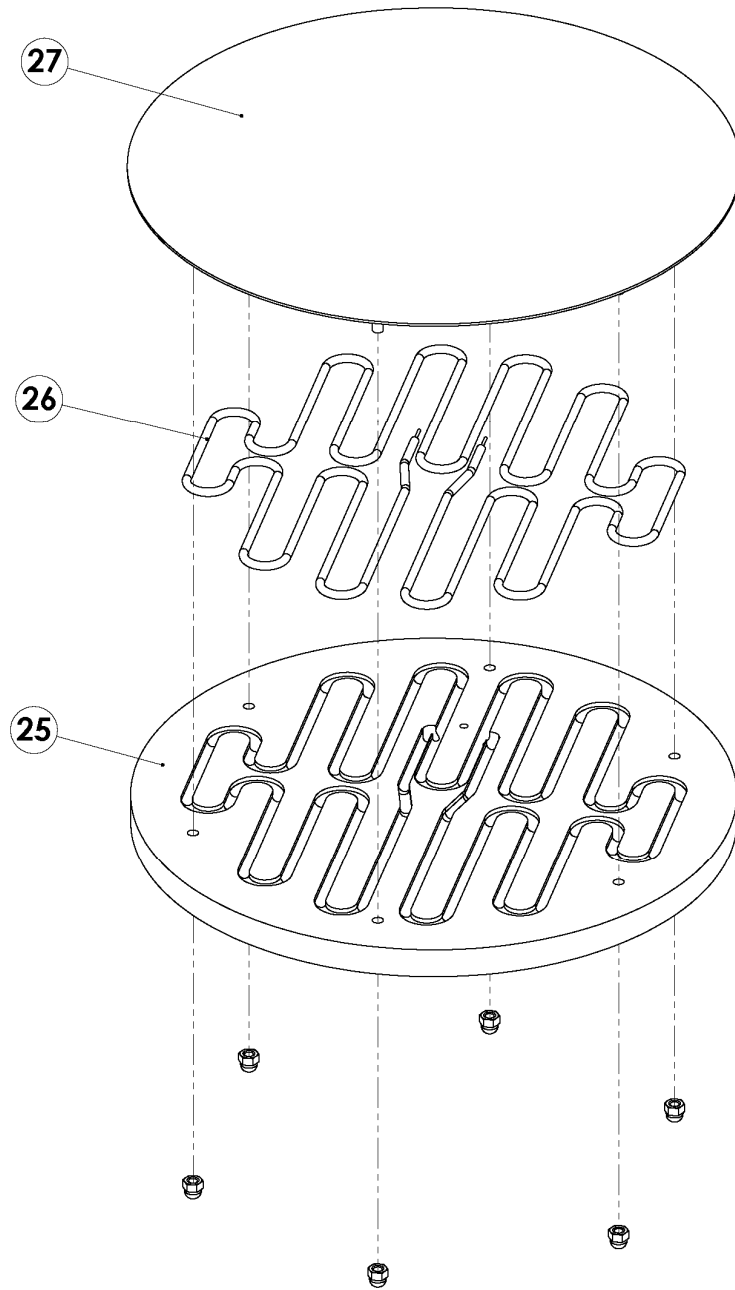
Item C



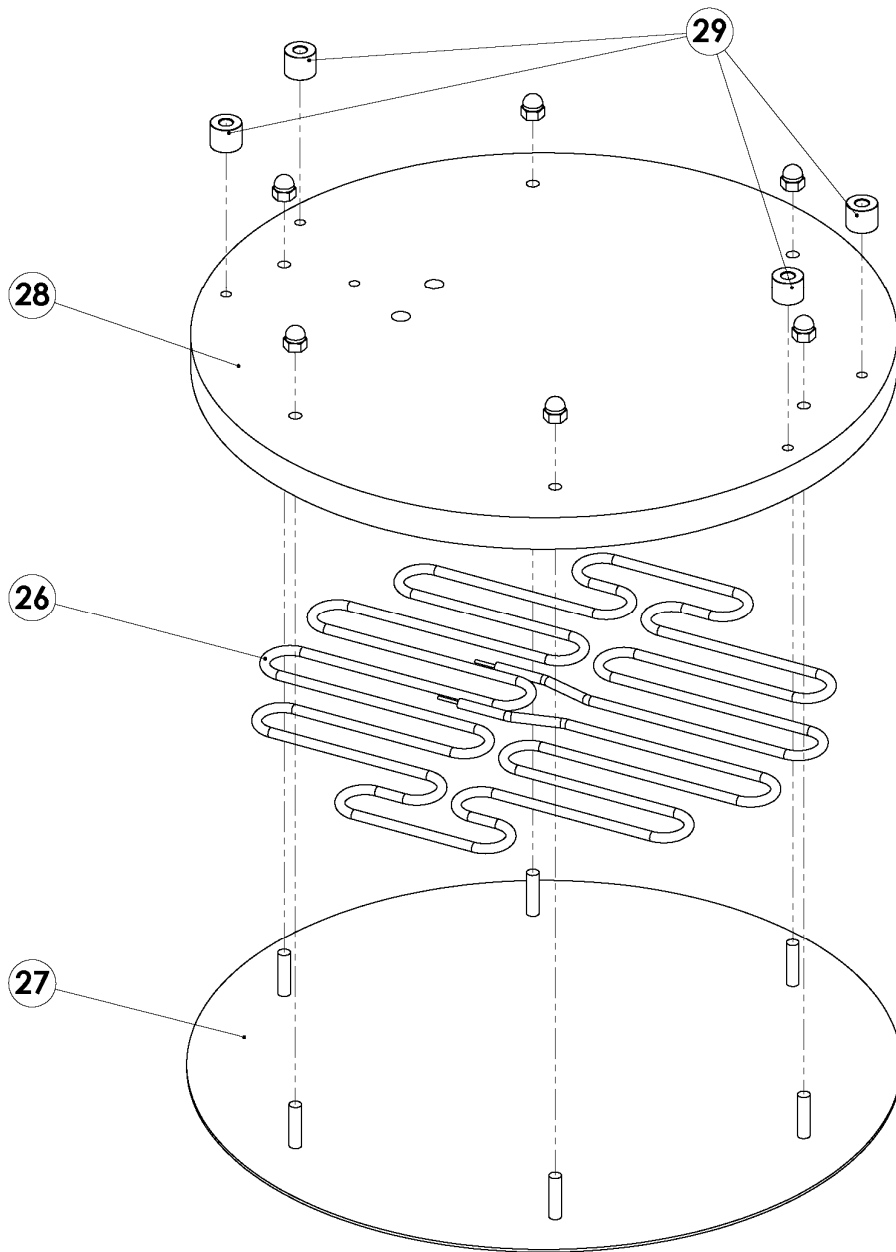
Item D



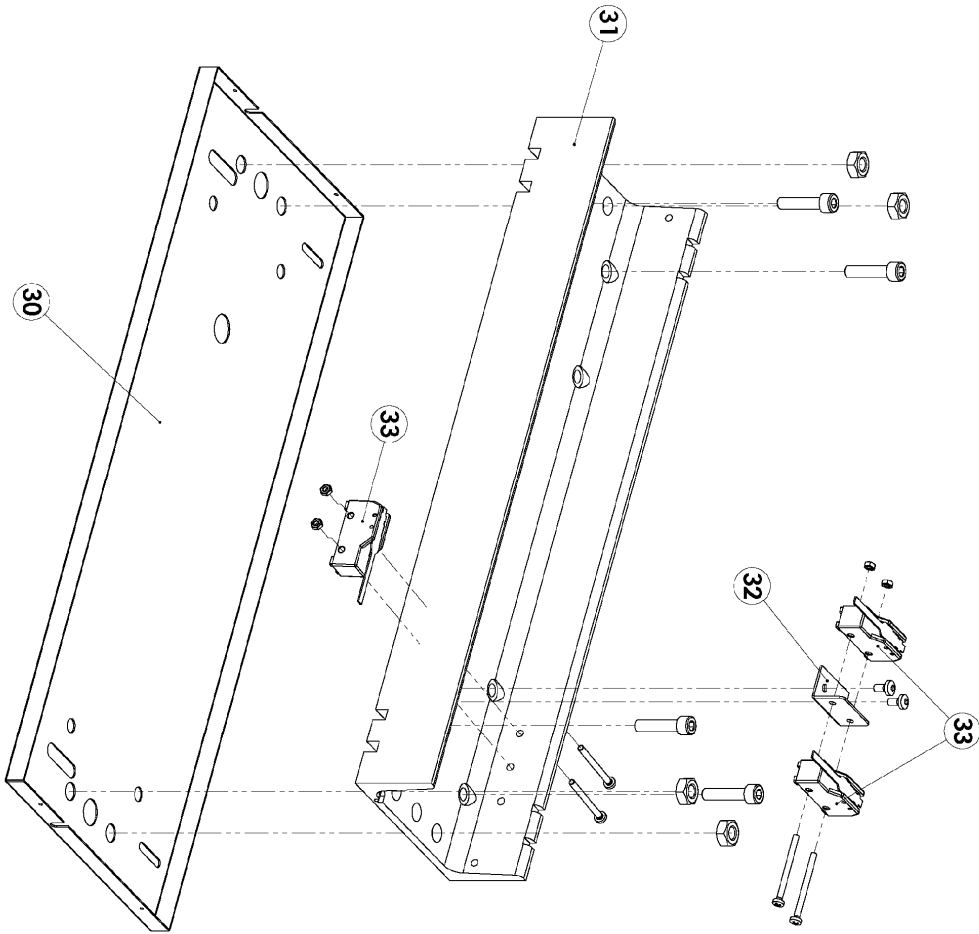
Item E



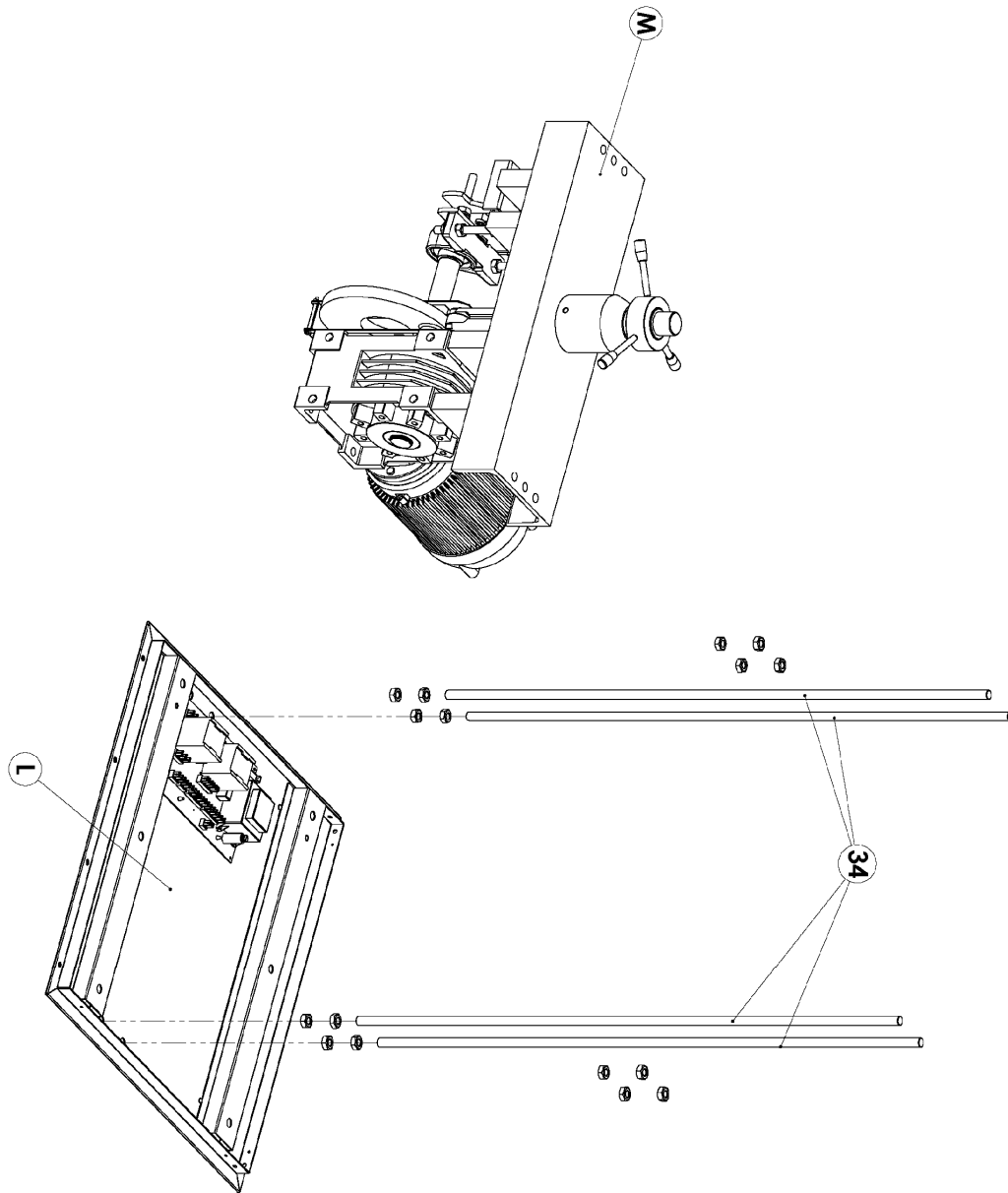
Item F



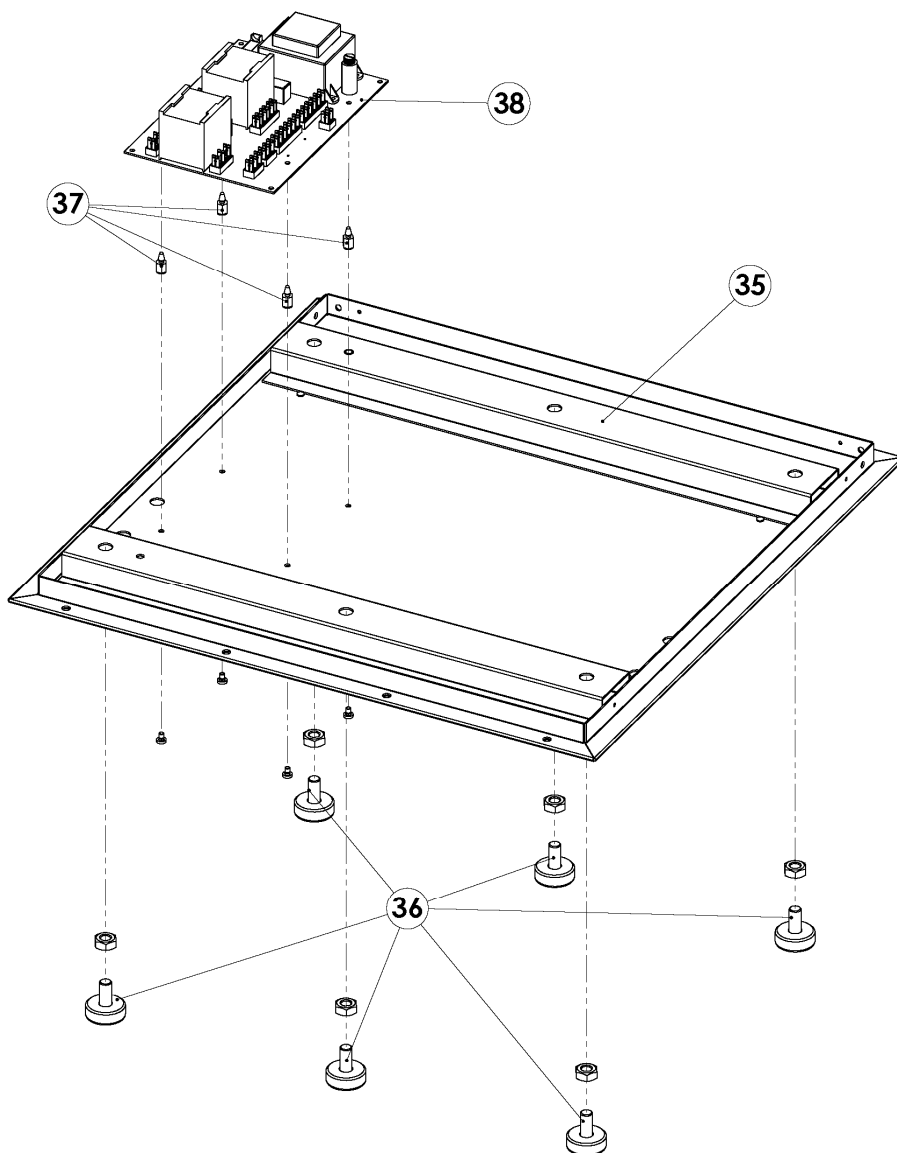
Detail G



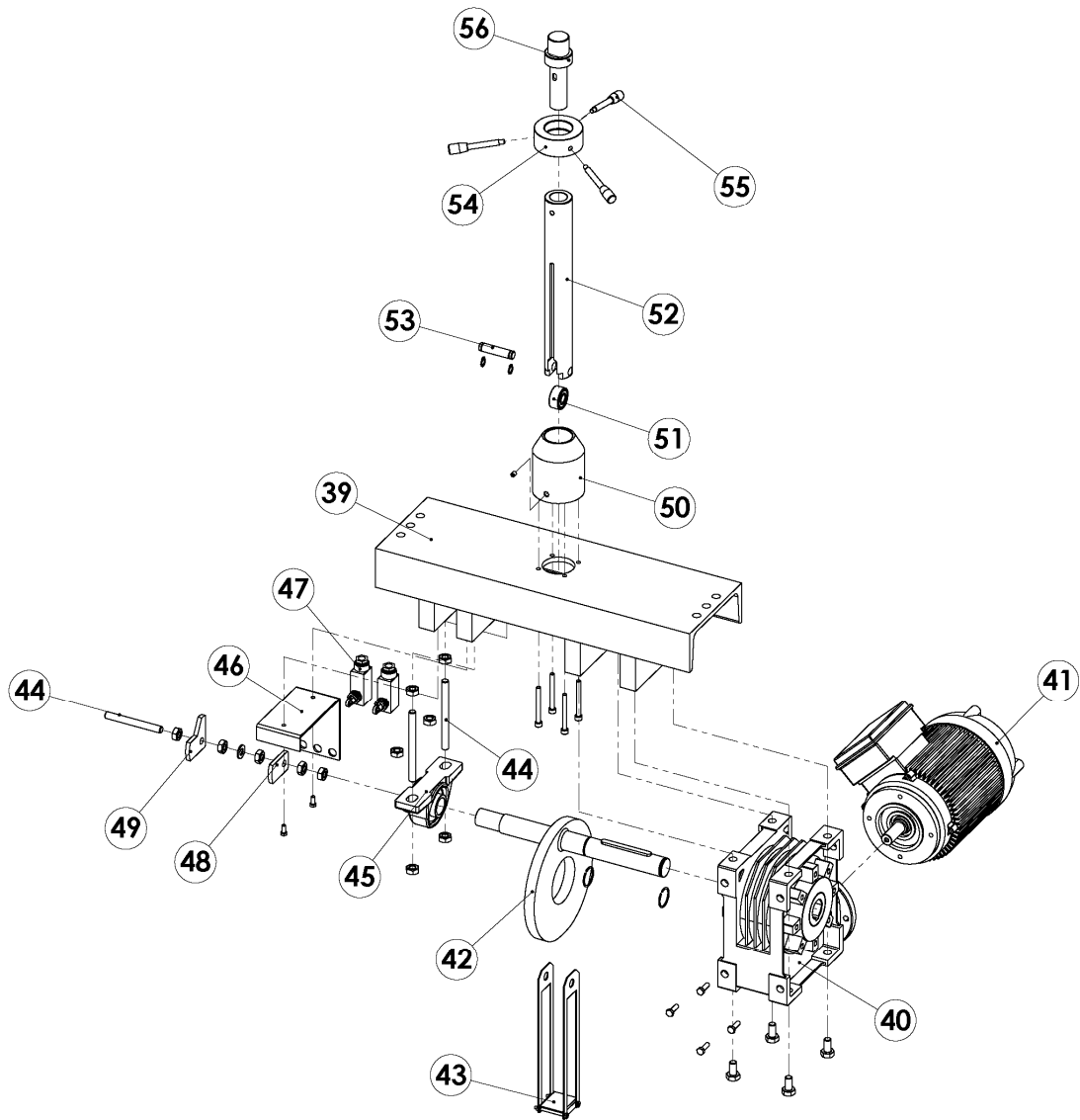
Detail H



Detail I



Detail L



Detail M

| MOD | PF 30 | PF 33 | PF 36 | PF 40 | PF 45 |
|-------------|--------------|--------------|--------------|--------------|--------------|
| POS. | | | | | |
| 1 | 3710520 | 3710520 | 3710520 | 3710540 | 3710540 |
| 2 | 3710380 | 3710380 | 3710380 | 3710390 | 3710390 |
| 3 | 3710480 | 3710480 | 3710480 | 3710500 | 3710500 |
| 4 | 5320080 | 5320080 | 5320080 | 5320080 | 5320080 |
| 5 | 8301050 | 8301050 | 8301050 | 8301050 | 8301050 |
| 6 | PF08600 | PF08600 | PF08600 | PF08600 | PF08600 |
| 7 | 5310360 | 5310360 | 5310360 | 5310360 | 5310360 |
| 8 | 5320750 | 5320750 | 5320750 | 5320750 | 5320750 |
| 9 | PF08500 | PF08500 | PF08500 | PF08500 | PF08500 |
| 10 | 3710530 | 3710530 | 3710530 | 3710550 | 3710550 |
| 11 | 5581170 | 5581170 | 5581170 | 5581170 | 5581170 |
| 12 | 3710150 | 3710150 | 3710150 | 3710160 | 3710160 |
| 13 | 3710070 | 3710070 | 3710070 | 3710080 | 3710080 |
| 14 | 3710280 | 3710280 | 3710280 | 3710300 | 3710300 |
| 15 | 3710290 | 3710290 | 3710290 | 3710310 | 3710310 |
| 16 | 3711060 | 3711070 | 3711080 | 3711090 | 3711100 |
| 17 | PF00800 | PF00800 | PF00800 | PF00790 | PF00790 |
| 18 | PF00810 | PF00810 | PF00810 | PF00810 | PF00810 |
| 19 | PF00820 | PF00820 | PF00820 | PF00820 | PF00820 |
| 20 | 5094400 | 5094400 | 5094400 | 5094400 | 5094400 |
| 21 | PF01210 | PF01210 | PF01210 | PF01210 | PF01210 |
| 22 | 3710210 | 3710210 | 3710210 | 3710220 | 3710220 |
| 23 | 3710580 | 3710590 | 3710600 | 3710610 | 3710620 |
| 24 | 5873300 | 5873300 | 5873300 | 5873300 | 5873300 |
| 25 | PF01110 | PF01110 | PF01120 | PF01120 | PF01130 |
| 26 | 5590710 | 5590710 | 5590710 | 5590760 | 5590760 |
| 27 | PF01140 | PF01150 | PF01160 | PF01170 | PF01180 |
| 28 | PF01110 | PF01110 | PF01120 | PF01120 | PF01130 |
| 29 | 3710370 | 3710370 | 3710370 | 3710370 | 3710370 |
| 30 | 3710320 | 3710330 | 3710340 | 3710350 | 3710360 |
| 31 | 3710130 | 3710130 | 3710130 | 3710140 | 3710140 |
| 32 | 3002360 | 3002360 | 3002360 | 3002360 | 3002360 |

| | | | | | |
|-----------|---------|---------|---------|---------|---------|
| 33 | 5400250 | 5400250 | 5400250 | 5400250 | 5400250 |
| 34 | 3710110 | 3710110 | 3710110 | 3710120 | 3710120 |
| 35 | 3710050 | 3710050 | 3710050 | 3710060 | 3710060 |
| 36 | 5874000 | 5874000 | 5874000 | 5874000 | 5874000 |
| 37 | 5320760 | 5320760 | 5320760 | 5320760 | 5320760 |
| 38 | 5310090 | 5310090 | 5310090 | 5310090 | 5310090 |
| 39 | 3710090 | 3710090 | 3710090 | 3710100 | 3710100 |
| 40 | PF08410 | PF08410 | PF08410 | PF08400 | PF08400 |
| 41 | PF08300 | PF08300 | PF08300 | PF08300 | PF08300 |
| 42 | 3710190 | 3710190 | 3710190 | 3710200 | 3710200 |
| 43 | 3710750 | 3710750 | 3710750 | 3710760 | 3710760 |
| 44 | 4060940 | 4060940 | 4060940 | 4060940 | 4060940 |
| 45 | 5094360 | 5094360 | 5094360 | 5094360 | 5094360 |
| 46 | 3710260 | 3710260 | 3710260 | 3710260 | 3710260 |
| 47 | 5400100 | 5400100 | 5400100 | 5400100 | 5400100 |
| 48 | 3007150 | 3007150 | 3007150 | 3007150 | 3007150 |
| 49 | 3007180 | 3007180 | 3007180 | 3007180 | 3007180 |
| 50 | PF00630 | PF00630 | PF00630 | PF00630 | PF00630 |
| 51 | 5090100 | 5090100 | 5090100 | 5090100 | 5090100 |
| 52 | 3710230 | 3710230 | 3710230 | 3710240 | 3710240 |
| 53 | 4060650 | 4060650 | 4060650 | 4060650 | 4060650 |
| 54 | 4060200 | 4060200 | 4060200 | 4060200 | 4060200 |
| 55 | 4060560 | 4060560 | 4060560 | 4060560 | 4060560 |
| 56 | 3710270 | 3710270 | 3710270 | 3710270 | 3710270 |

12 TECHNICAL DATA

| model | dough weight | ∅ upper plates | ∅ lower plates | power | | voltage | machine dimensions | weight |
|-------|--------------|----------------|----------------|-------|-----|---------|--------------------|--------|
| | g | cm | cm | kW | Hp | V | lpxh | kg |
| PF30 | 120÷250 | 30 | 30 | 3,55 | 4,7 | 230-400 | 47x52x82 | 110 |
| PF33 | 130÷250 | 33 | 33 | 3,55 | 4,7 | 230-400 | 45x62x82 | 112 |
| PF36 | 140÷300 | 36 | 36 | 3,55 | 4,7 | 230-400 | 45x62x82 | 115 |
| PF40 | 200÷350 | 40 | 40 | 5,55 | 4,7 | 230-400 | 55x62x88 | 156 |
| PF45 | 250÷500 | 45 | 45 | 5,55 | 4,7 | 230-400 | 55x72x90 | 162 |

03-2009